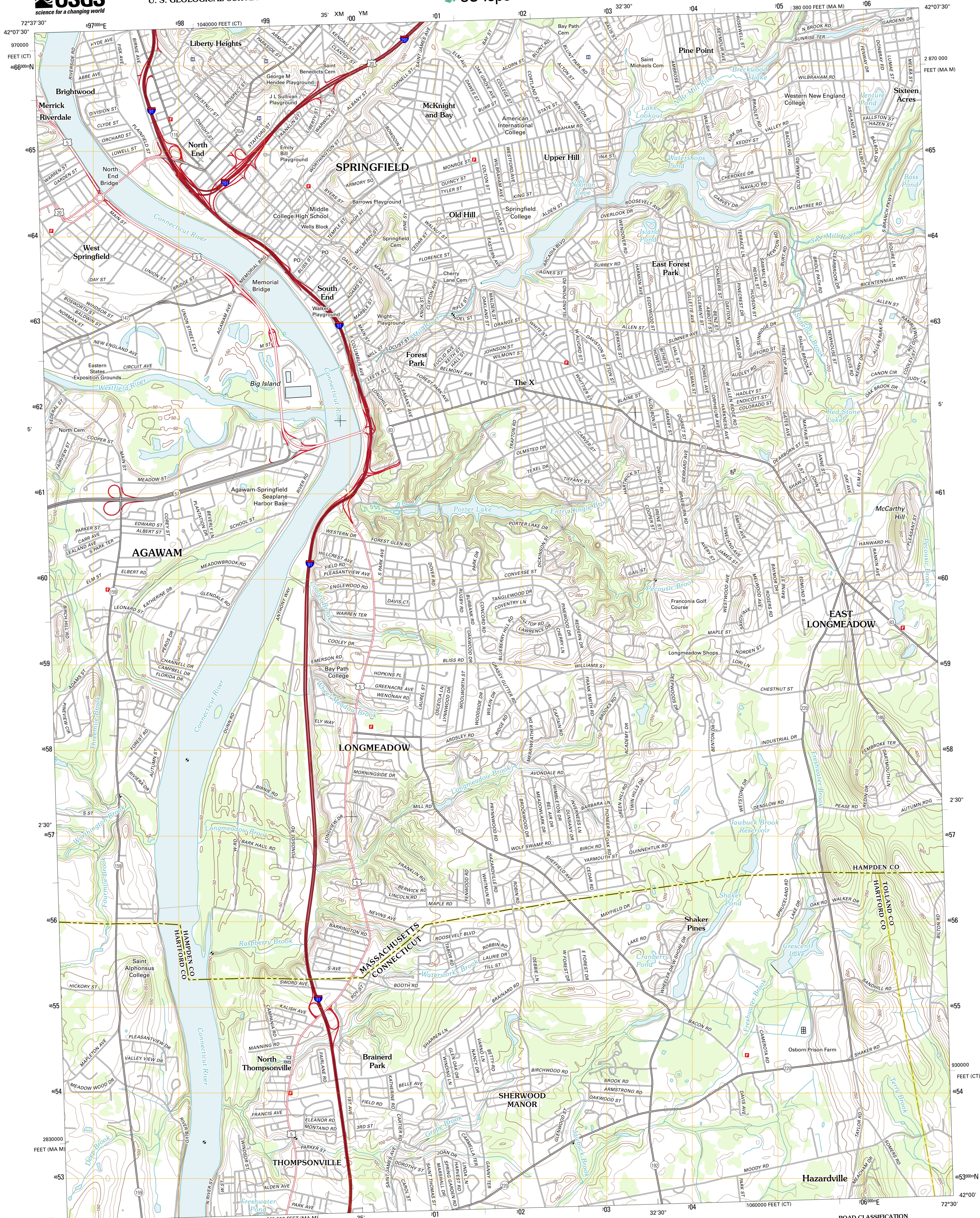




U.S. DEPARTMENT OF THE INTERIOR
U. S. GEOLOGICAL SURVEY

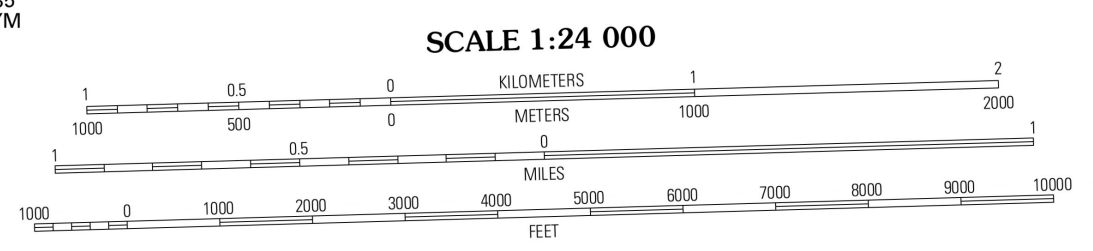
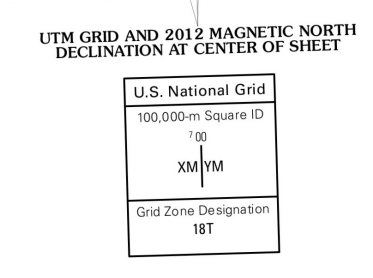


SPRINGFIELD SOUTH QUADRANGLE
MASSACHUSETTS-CONNECTICUT
7.5-MINUTE SERIES



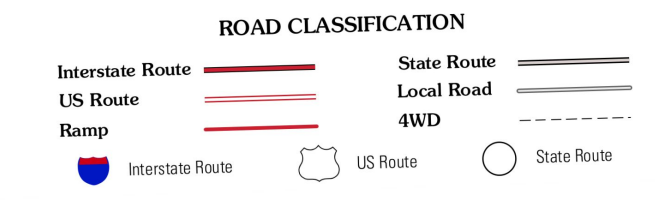
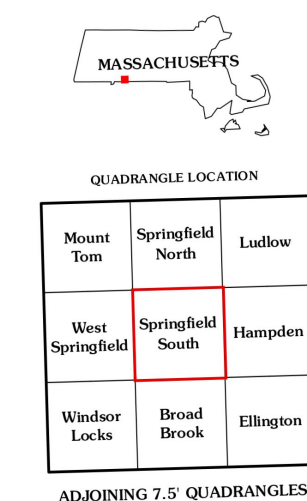
Produced by the United States Geological Survey
North American Datum of 1983 (NAD83)
World Geodetic System of 1984 (WGS84). Projection and
1 000-meter grid: Universal Transverse Mercator, Zone 18T
10 000-foot ticks: Massachusetts Coordinate System of 1983
(mainland zone), Connecticut Coordinate System of 1983

Images: NAD, August 2010
Roads: ©2006-2011 TomTom
Names: ©GNSS, 2011
Hydrography: National Hydrography Dataset, 2010
Contours: National Elevation Dataset, 1998
Boundaries: Census, IBWC, IBC, USGS, 1972 - 2010



SCALE 1:24 000
CONTOUR INTERVAL 10 FEET
NORTH AMERICAN VERTICAL DATUM OF 1988

This map was produced to conform with the
National Geospatial Program US Topo Product Standard, 2011.
A metadata file associated with this product is draft version 0.6.2



QUADRANGLE LOCATION

Mount Tom	Springfield North	Ludlow
West Springfield	Springfield South	Hampden
Windsor Locks	Broad Brook	Ellington

ADJOINING 7.5 QUADRANGLES

SPRINGFIELD SOUTH, MA-CT
2012

