

Tolland Fire Department Firefighter Orientation

May 2026



Topics Covered

- **Part I**
 - Fire Department Organization
 - Roles and Responsibilities
 - Administrative Policies/ SOGs
 - Types of Emergency & Non Emergency Calls
 - Important Information
- **Part II**
 - Personal Protective Equipment
 - Responding to Emergencies
 - Fire School
 - FAQ and more!
- **Part III**
 - Fire Apparatus
 - Fire Stations
 - Equipment

Mission Statement

- **The mission of the Tolland Fire Department is to honorably and safely protect our citizens and visitors, preserve their property, and promote public safety in a professional and caring manner. This is to be accomplished through quality fire and EMS training, well maintained equipment and apparatus, proactive fire prevention and inspection programs, and dedicated staff.**

The Tolland Fire Department supports its Mission Statement through its organizational values of Service, Bravery, and Sacrifice.

Part I

Joe Duval, Jr - Fire Lieutenant (Car 840) -> 17 year member

Explorer -> Firefighter -> Firefighter/EMT -> PSO -> Lieutenant

Fire & Life Safety Specialist, Office of the State Fire Marshal

Associates Degree - Fire Science, Capital Community College

Bachelor's Degree - Fire Administration, Columbia Southern University

Tolland Fire Department, Inc

- Incorporated in 1933
- Separate volunteer organization not under the town municipality
- Fire protection and ambulance service for Town of Tolland
 - Under an agreement with Town of Tolland
- Combination department
 - Mix of career and volunteer
- Volunteers cover nights, weekends, and holidays. 108 hours per week!
- Career staff covers weekdays 6am to 6pm
- Approximately 80 members
 - Active, Special, Auxiliary, and Career staff



Tolland Fire Department, Inc

- Provides the following services:
 - Fire Suppression
 - Basic Life Support (BLS) ambulance service
 - Basic Rescue
 - Hazardous Material Operations
 - Fire Prevention
 - Public Education
 - CPR Training
 - Many other items!



Yearly Call Volume

- 2025 = **2178** total calls for service
 - Career Hours (weekdays) = 1021
 - Volunteer Hours (weeknights, weekends, & holidays) = **1157**
- Volunteer Hours - 2025 Breakdown
 - Medical Calls = 791
 - Fire related= 157
 - MVA = 82
 - Service related calls = 209

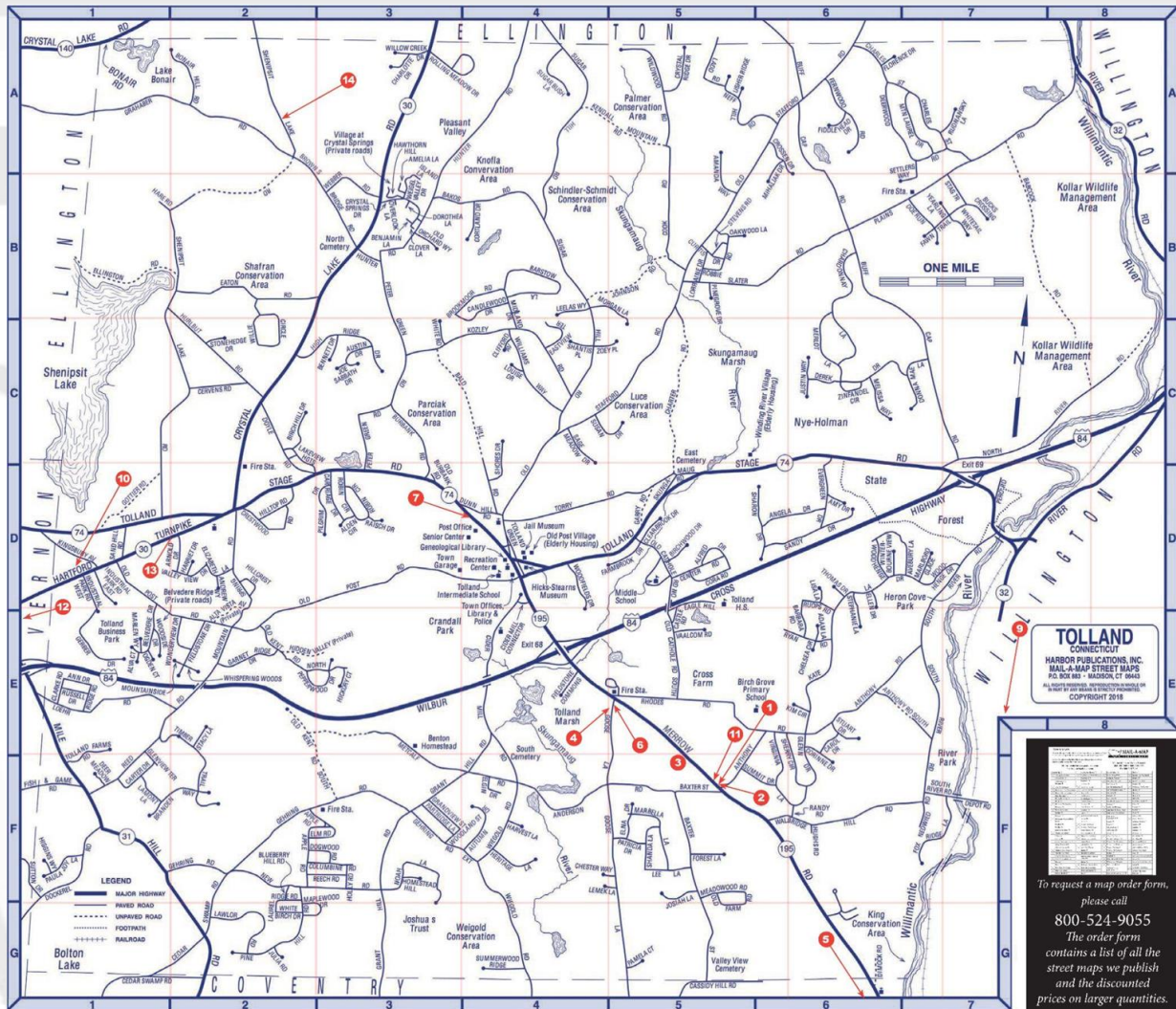
Who makes up the membership?

- Engineers
- Mechanics
- Truck Drivers
- Administrative Assistants
- Secretaries
- Fire Marshals
- Career firefighters
- Career EMTs
- UCONN Students
- Medical Students
- Retirees

Who do we protect and serve?

- **Protect the Town of Tolland**
 - Citizens/Travelers/Visitors
 - Protect neighboring towns on a mutual aid basis
- **Population approximately 16,000**
- **Size is approximately 41 square miles**
- **Boarding towns: Coventry, Ellington, Vernon, & Willington**
- **Mostly Residential with some commercial**
- **I-84, state roads, small and large bodies of water, railroad system, many town and state park properties, and air traffic routes**
- **Lots of potential hazard spots**





To request a map order form,
 please call
800-524-9055
 The order form
 contains a list of all the
 street maps we publish
 and the discounted
 prices on larger quantities.

Board of Directors

- Setting policy
- Overseeing membership
- Appoints a fire chief
- Confirming fire chiefs appointment to line officers
- Legal responsibility
- Develops bylaws/administrative policies
- Hold monthly business meetings
- Hold annual meeting



Board of Directors

- **Corporate Officers:**

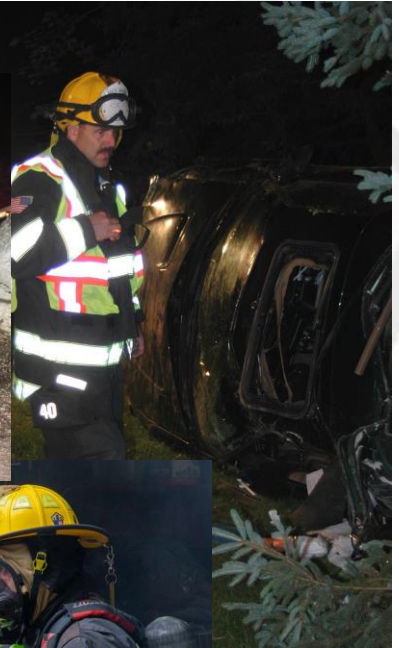
- **President - Jared Senelick -> 13 year member**
- **Vice President - Tony Calchera, Sr -> 8 year member**
- **Secretary - Vacant**
- **Treasurer - Kelly Euliano -> 13 year member**

- **Directors at Large:**

- **Chairwomen - Tina Binheimer -> 8 year member**
- **Director at Large - Anthony Calchera, Jr -> 7.5 year member**
- **Director at Large - Vacant**

Line Officers

- Appointed by the fire chief
- Fire Chief appointed by Board of Directors
- Running day to day operations
- Incident Command
- Emergency response
- Training of personnel
- SOG development and enforcement
- Meet the minimum criteria within the Admin Policies/SOGs



Line Officers

- **Fire Chief - John Littell (Car 40)**
 - 36 years in fire service
 - Town Director of Public Safety & Emergency Management Director
- **Assistant Fire Chief - Carl Dojan (Car 140)**
 - 44 years in fire service (23 year member)
 - Program Manager - ECFS (Retired West Hartford Fire Captain)
- **Deputy Fire Chief - Doug Indermaur (Car 240)**
 - 41 years in fire service (31 year member)
 - Marine Mechanic
- **Fire Captain - Ben Roper (Car 440)**
 - 19 years in fire service
 - Career UCONN Fire Lieutenant

Line Officers

- **Fire Captain - Rich Walbridge (Car 540)**
 - 15 years in fire service (12 year member)
 - Airway Transportation Systems Specialist - FAA
- **Fire Lieutenant - Jeff Brodfuehrer (Car 740)**
 - 29 years in the fire service (11 year member)
 - Career Firefighter, Westover Air Force Base, Chicopee MA
- **Fire Lieutenant - Joe Duval, Jr (Car 840)**
 - 17 years in the fire service
 - Fire & Life Safety Specialist (certified Fire Marshal), State of CT OSFM

Line Officers

- **Medical Captain - Don Corne (Medic 540)**
 - 29 years in ems (21 year member)
 - Nurse (RN) for Somers Public Schools
- **Medical Lieutenant - Amy Ziegelmeier (Medic 640)**
 - 8 years in fire service
 - Full Time Physician Assistant Student
- **Medical Lieutenant - Jordan Williams (Medic 740)**
 - 6 years in ems
 - Town of Vernon Fire Full Time EMT

Department Chaplains

- **Jeff Gallagher - Chaplain (Portable 2040)**
 - 9 year member (23 years as a minister)
 - Senior Minister - United Congregational Church of Tolland
 - Connecticut State Police Chaplain
- **Kim Gottier - Asst. Chaplain (Portable 2140)**
 - 5 year member
 - Spiritual Director/Companion

Fire Police Unit

- Assists with traffic control
- Securing scenes
- Support personnel
- Assist with manpower on scenes
- Lead by:
 - Fire Police Captain - Carl "CJ" Davis (PD140)
 - 16 year member
 - Retired State of CT Dept. of Corrections (DOC)
 - Fire Police Lieutenant - Jim Desilets (PD240)
 - 33 year member (former department firefighter/driver)
 - Full Time Mechanic, Bundy Motors



Fire Police Unit

- **Fire Police Officer - Chris Curley (PD340)**
 - 23 year member (former firefighter/driver)
- **Fire Police Officer - Tina Binheimer (PD440)**
 - 8 year member
- **Fire Police Officer - Tony Calchera, Jr (PD540)**
 - 8 year member
- **Fire Police Officer - Jon Sisson (PD640)**
 - 5 year member
- **Fire Police Officer - Ken Trice (PD740)**
 - 2 year member

Tolland Public Safety Department

- Established in 1980
 - April 14, 1980
- Department under the Town of Tolland
- Assist the Tolland Fire Department during weekdays
- Town hires the career staff (Public Safety Officers)
- Total 10 career staff
 - Director of Public Safety
 - Assistant Director of Public Safety/Fire Marshal
 - Career Public Safety Captain
 - (7) Public Safety Officers
- Work weekdays 6am to 6pm
 - Each PSO works an 8 hour shift



Tolland Public Safety Department

SERVING SINCE 1933

- Public Safety Officers are certified firefighters, EMTs, fire apparatus drivers, and many other skills
- Respond to all emergency and non emergency calls in town or surrounding towns
- Maintains the fire apparatus and fire stations
- Daily and weekly inspections of fire equipment
- Teach fire prevention to public
- Work community events in town
- Teach training classes for the department
- Many other tasks



Tolland Public Safety Staff

- **Director of Public Safety/EMD - John Littell (Car 40)**
 - 36 year member (Also volunteer Fire Chief)
- **Asst. Director of Public Safety/Fire Marshal - Rob DaBica (FM-140)**
 - 12 year member (53 years in fire service)
- **Career Public Safety Captain - Tim Seitz (Car 340)**
 - 5 year member (23 years in fire service)
- **Public Safety Officer - Alex Merced (Portable 140)**
 - 13 year member (13 years in fire service)
- **Public Safety Officer - Trevor Gantick (Portable 240)**
 - 11 year member (21 years in fire service)

Tolland Public Safety Staff

- **Public Safety Officer - Frank Falcone (Portable 340)**
 - 10 year member (46 years in fire service)
- **Public Safety Officer - Chris Handel (Portable 440)**
 - 6 year member (26 years in EMS/ 11 years in fire service)
- **Public Safety Officer - Julia Meyer (Portable 540)**
 - 7 years in fire service
- **Public Safety Officer - Nick Audette (Portable 640)**
 - 6 years in fire service
- **Public Safety Officer - Mike Lee (Portable 740)**
 - 2 year member (13 years in fire service)

Tolland Public Safety Staff

- **Public Safety Secretary - Betsy Tanner**
 - 21 year member
- **Public Safety Secretary - Kelly Euliano**
 - 11 year member (Also department treasurer)
- **Animal Control Officer - (ACO 140)**
- **Animal Control Officer - (ACO 240)**

Water Supplies

- 20% of the town has pressurized hydrants:
 - Connecticut Water Company (CWC)
 - Tolland Water Commission (TWC)
- 80% of the town does not have pressurized hydrants:
 - Rely on Static Water Sources
 - Dry hydrants, Ponds, Rivers, Lakes, Cisterns, or swimming pools
 - Rely on Shuttling Water
 - Tankers



TOWN OF TOLLAND
FIRE HYDRANT LOCATIONS
WITH APPROX. FIRE FLOWS

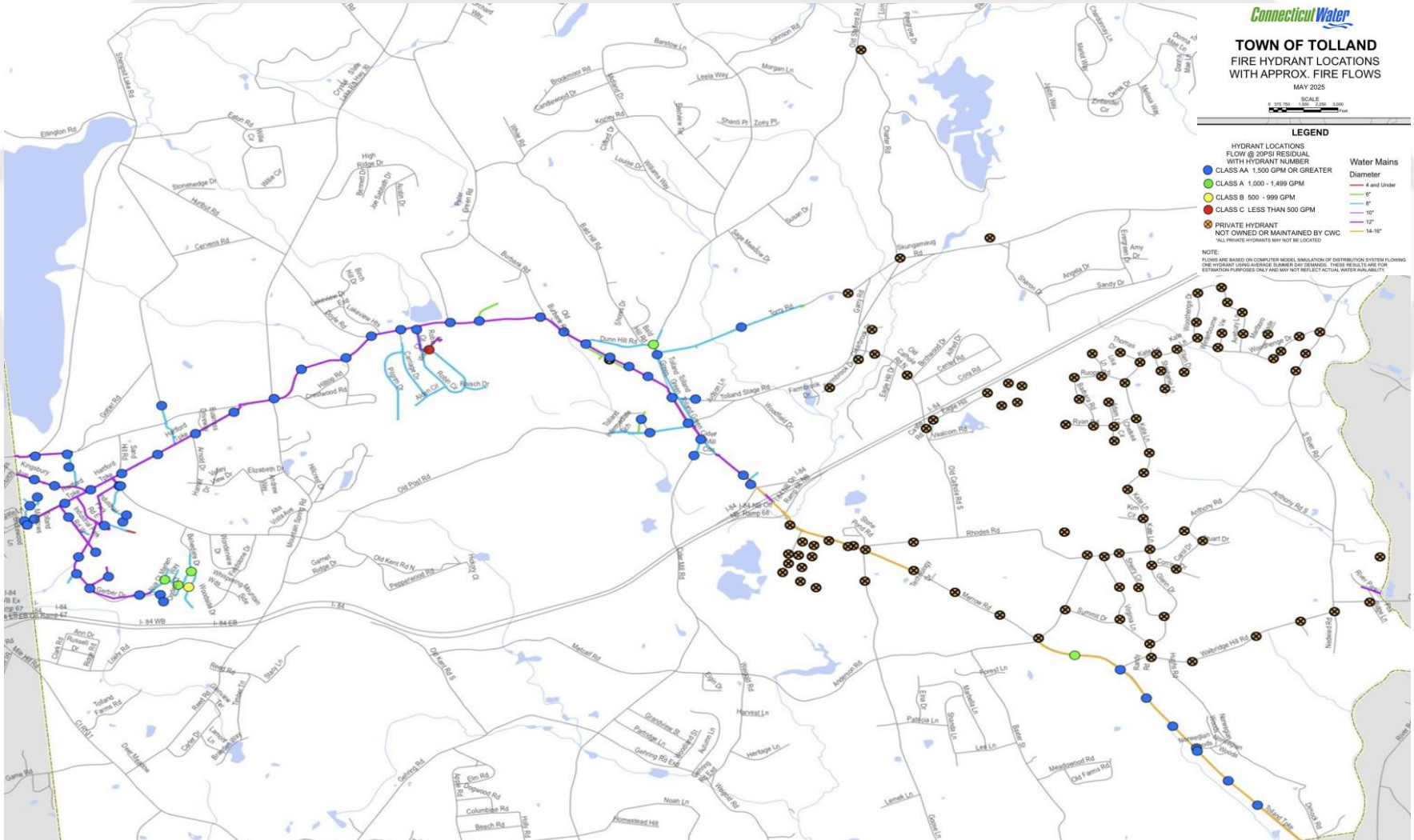
MAY 2025

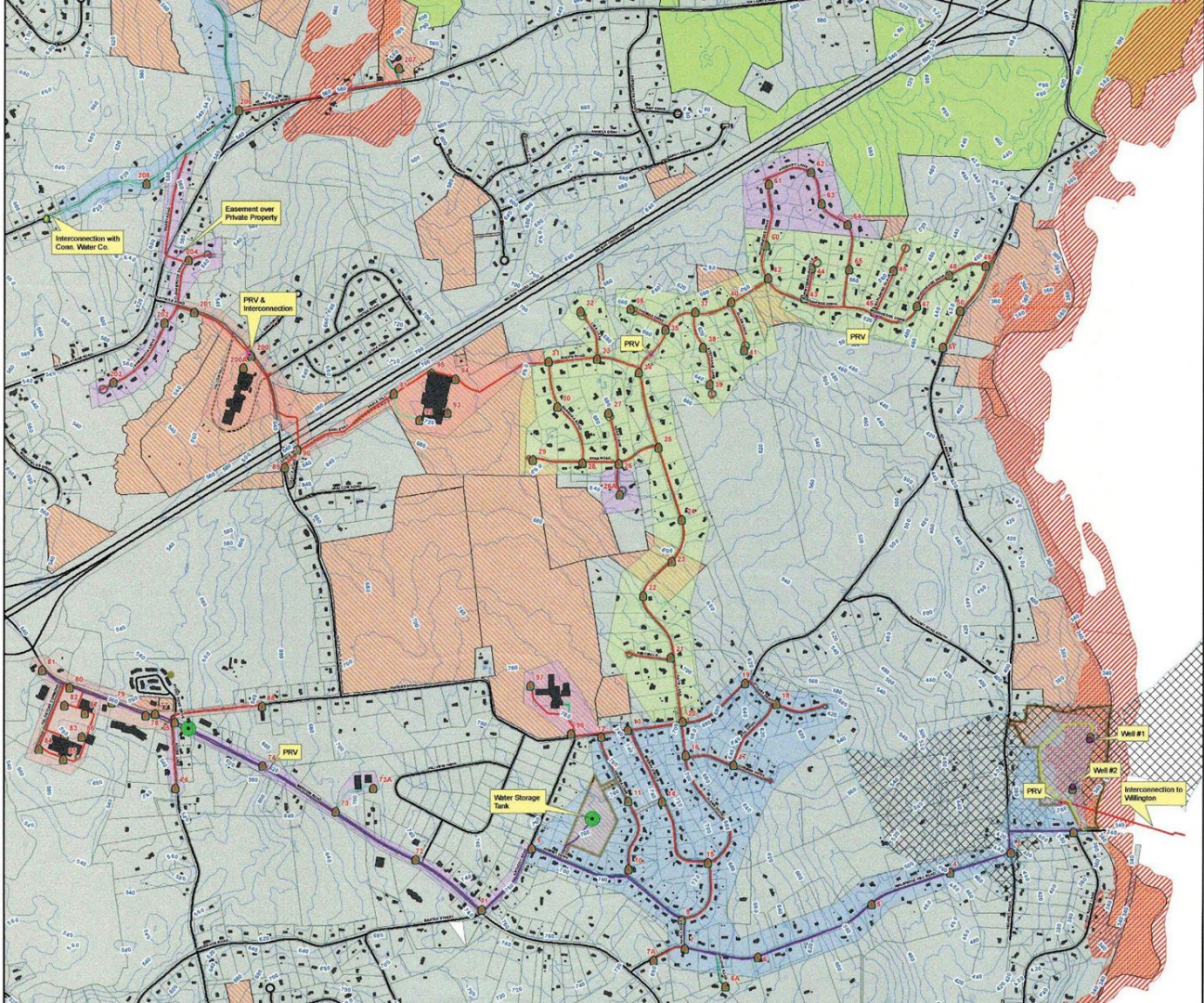


LEGEND

- HYDRANT LOCATIONS**
 FLOW @ 20PSI RESIDUAL
 WITH HYDRANT NUMBER
- CLASS A 1,500 GPM OR GREATER
 - CLASS B 500 - 999 GPM
 - CLASS C LESS THAN 500 GPM
 - ⊗ PRIVATE HYDRANT
 NOT OWNED OR MAINTAINED BY CWC
- Water Mains**
 Diameter
- 4 and Under
 - 6"
 - 8"
 - 10"
 - 12"
 - 14-16"

NOTE:
 FLOWING BASED ON COMPUTER MODEL SIMULATION OF DISTRIBUTION SYSTEM FLOWING ONE HYDRANT USED AS A SOURCE SUMMER DAY DEMAND. THESE RESULTS ARE FOR ESTIMATION PURPOSES ONLY AND MAY NOT REFLECT ACTUAL WATER AVAILABILITY.





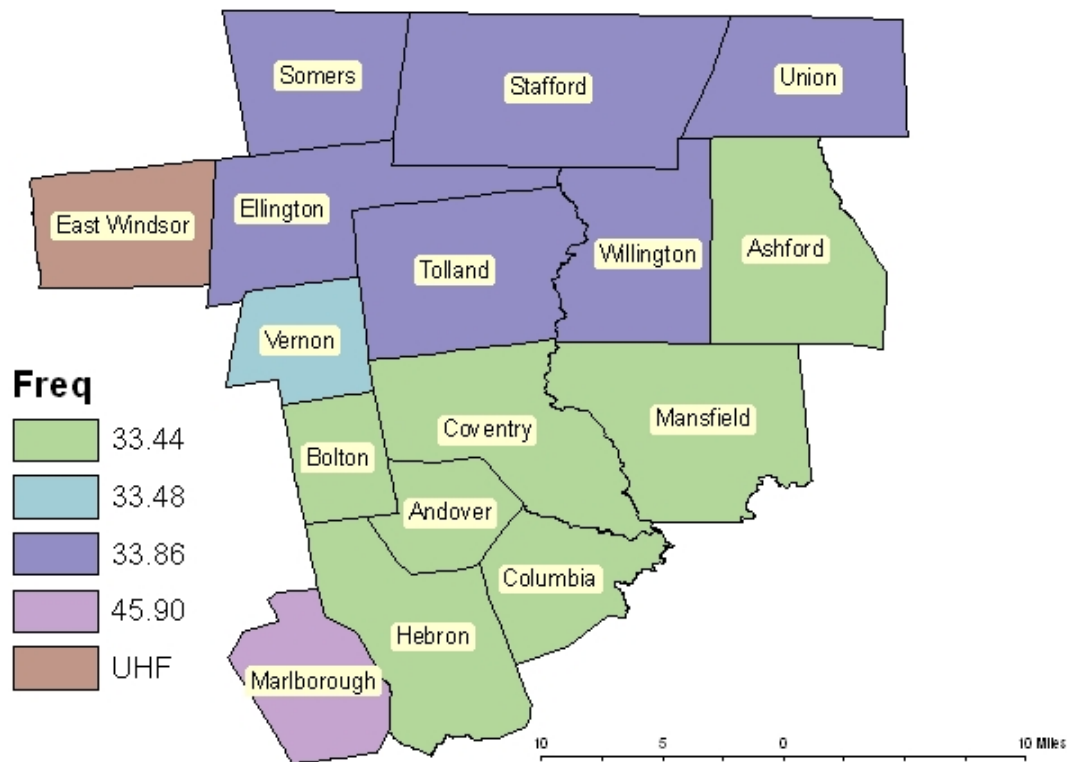
Tolland County Mutual Aid Fire Service (TN)

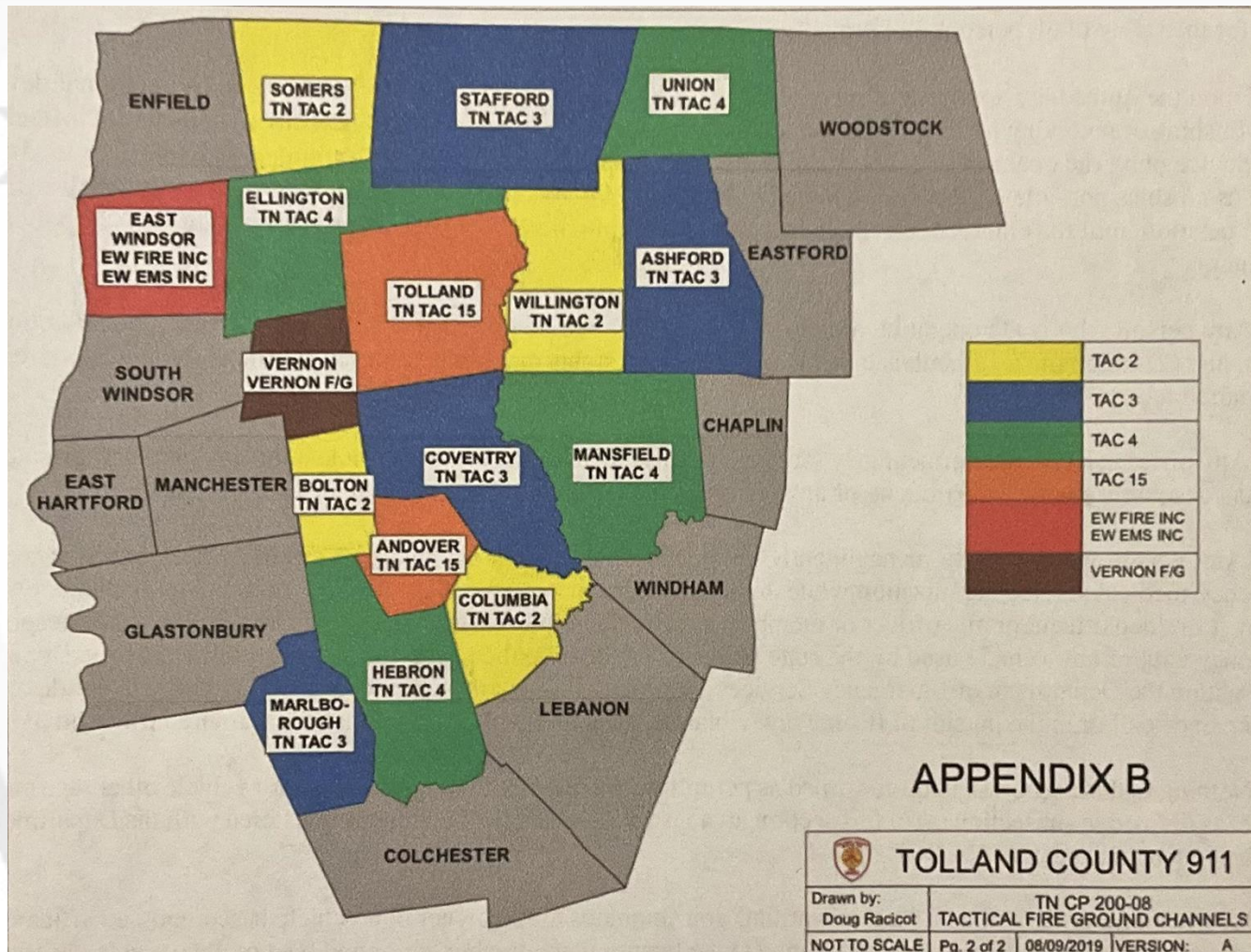
- Provides 911 service to the Tolland Fire Department and Town of Tolland
- Located on Tolland Green
- Provides 911 answering service to fire department and ambulance agencies in Tolland County and other towns in the state.
- Known as “TN” or “Station TN”
- Tolland Fire main operating frequency is 33.86
- Tolland Fire main in scene operational frequency Tac 15 or Tac 1
- Tolland's Call Sign is **40**



Tolland County Mutual Aid Fire Service

Main Operating Frequency





APPENDIX B

 TOLLAND COUNTY 911	
Drawn by: Doug Racicot	TN CP 200-08 TACTICAL FIRE GROUND CHANNELS
NOT TO SCALE	Pg. 2 of 2 08/09/2019 VERSION: A

Medic Services

- There are some calls that require advanced life support (ALS) medical service
 - Examples: Chest pains, difficulty breathing, traumas, etc
- We are only a basic life support (BLS) medical service and we receive ALS from:
 - Rockville Medic (American Medical Response (AMR))
 - Ambulance Service of Manchester (ASM)
 - Trinity Health Care (Johnson Hospital Medic)
 - Somers Fire Medic
 - Windham Hospital Medic
- Rockville Medic is the primary ALS service for the tri town area
 - Tri Town Area is Vernon, Ellington, and Tolland who pay for this service
 - Rockville Medic comes to town first if available
 - All others are secondary if Rockville medic is unavailable

Life Star

- **Hartford Hospital**
 - Three (3) helicopters
 - Meriden, Norwich, and Westfield, MA
- **TN will do a DIAL Launch**
 - Dispatch Initiated Auto Launch
- **Request Life Star for the following examples:**
 - Falls > 20 feet
 - Ejection
 - Severe burns
 - Increased Travel Time
- **Cover some more in Part II**



Fire Department By Laws

- Developed by the Board of Directors
- Voted on by the membership
- Outlines the departments:
 - Organizational Structure
 - Responsibilities
 - Operations
- Membership requirements
- Fire Chief requirements
- Meeting rules
- Found in stations
 - Your responsibility to review and become familiar

BYLAWS
OF
THE TOLLAND FIRE DEPARTMENT, INC.

Article I. NAME: PRINCIPAL OFFICE

A. The name of the corporation is The Tolland Fire Department, Inc. (referred to herein as "the corporation").

B. The corporation shall maintain a principal office at a location designated by its Board of Directors in the Town of Tolland, Connecticut.

Article II. PURPOSES: POWERS

A. The primary purposes of the corporation are:

1. to recruit, train and encourage active participation by volunteer members capable of providing fire suppression, rescue, emergency medical and related services as part of the Tolland Fire Department (hereinafter the "department") in the Town of Tolland and, when necessary, as mutual aid to the surrounding community;

2. to aid in the preservation and protection of life and property and improve the general welfare of the Tolland community through education and community programs concerning fire prevention, emergency preparedness, health and life safety issues.

B. Without limiting the powers granted to all non-stock corporations in Chapter 602 of the Connecticut General Statutes, the corporation may:

1. acquire any and all types of land, buildings, furnishings, vehicles, apparatus, and equipment by gift, purchase, lease or otherwise;

2. use and operate such buildings, vehicles, equipment and apparatus acquired by it or provided by the Town of Tolland or others for its use;

3. solicit and accept grants and gifts, engage in lawful fund-raising activities, and expend funds in support of its corporate purposes;

4. contract with the Town of Tolland to provide fire suppression, rescue, emergency medical and related services;

5. hire such employees and recruit such volunteers as it deems necessary to accomplish its corporate purposes;

6. do all other things which are necessary and lawful to accomplish its corporate purposes.

Administrative Policies

- Acceptable and unacceptable practices while representing the department.
- Consists of department administrative policies
- Few Policies Examples:
 - Membership requirements
 - Confidentiality
 - Alcohol/Drugs
 - Sexual Harassment
- Found in binder at fire stations
 - Your responsibility to review and become familiar



TOLLAND FIRE DEPARTMENT, INC.
Administrative Policies



The design and contents of this document are proprietary to Tolland Fire Department, Inc., Tolland, Connecticut. These Administrative Policies shall not be reproduced in any manner without written permission from Tolland Fire Department.

5/9/2011
Tolland Fire Department, Inc.

Page 1

Administrative Policies

Standard Operating Guidelines (SOG)

- Official documents that outline the department operational:
 - Procedures
 - Methods
 - Instructions
- Ensure consistency
 - Common set of standards for all team members to follow
- Improve Safety
 - help to reduce risks by anticipating threats and dangers
- Predict Results
 - Allow department to predict and duplicate task results
 - Identify weaknesses
- Found in binders at stations and some on Fire Rescue 1
 - Your responsibility to review and become familiar



TOLLAND FIRE DEPARTMENT, INC.
Standard Operating Guidelines



The design and contents of this document are proprietary to Tolland Fire Department, Inc., Tolland, Connecticut. These Standard Operating Guidelines shall not be reproduced in any manner without written permission from Tolland Fire Department.

05/09/2011
Tolland Fire Department, Inc.

Page 1

Standard Operating Guidelines

Code of Ethics

- ADM 002 Code of Ethics
- Mutual respect and trust
- We share a responsibility to project an ethical character of:
 - professionalism, integrity, compassion, loyalty and honesty in all that we do, all the time.
- Conduct yourself in a manner that reflects:
 - Ethical behavior and integrity
- By doing this, you will help foster a continuing positive public perception of the fire service
- **ALL members must follow the Code of Ethics at all times!!**
- **No Exceptions!**

Alcohol & Drug Use

- **ADM Policy #2**
 - Alcohol beverages are NOT allowed when on:
 - Town properties
 - While responding on calls, or attending department activities and trainings
 - Exception: Alcohol may be consumed at the Annual Holiday Party with appropriate rules in place
 - Driving apparatus
- **ADM Policy #11**
 - Non Prescription drugs are NOT allowed when on:
 - Same criteria above
- **Strict department policies and found to be in violation will result in disciplinary actions**
- **No exceptions!**

Confidentiality (HIPAA)

- ADM Policy #9
- Everything said, heard, seen, witnessed, or done on emergency and non emergency calls is:
 - Kept Confidential to protect the people involved
 - Protect people's personal and medical information
- Strict department policy
- All members required annually to take online training class
- If found to violate this policy, will result in disciplinary action

Harassment

- SOG PD-19-002 & ADM Policy #20
- Treat everyone with dignity, respect, and decency.
- The following will NOT be tolerated:
 - Harassment
 - Sexual Harassment
 - Hazing
 - Assault
- Notify assigned officer if witnessed or know about a victim
- Disciplinary action if found in violation
- Town will investigate any complaints
- Everyone goes through yearly training

Discipline

- SOG ADM 004
- Not following department rules, policies, or SOGs constitute discipline
- Counseling
 - Coaching
- Reprimand
 - Written or Verbal Warning
- Suspension
- Termination

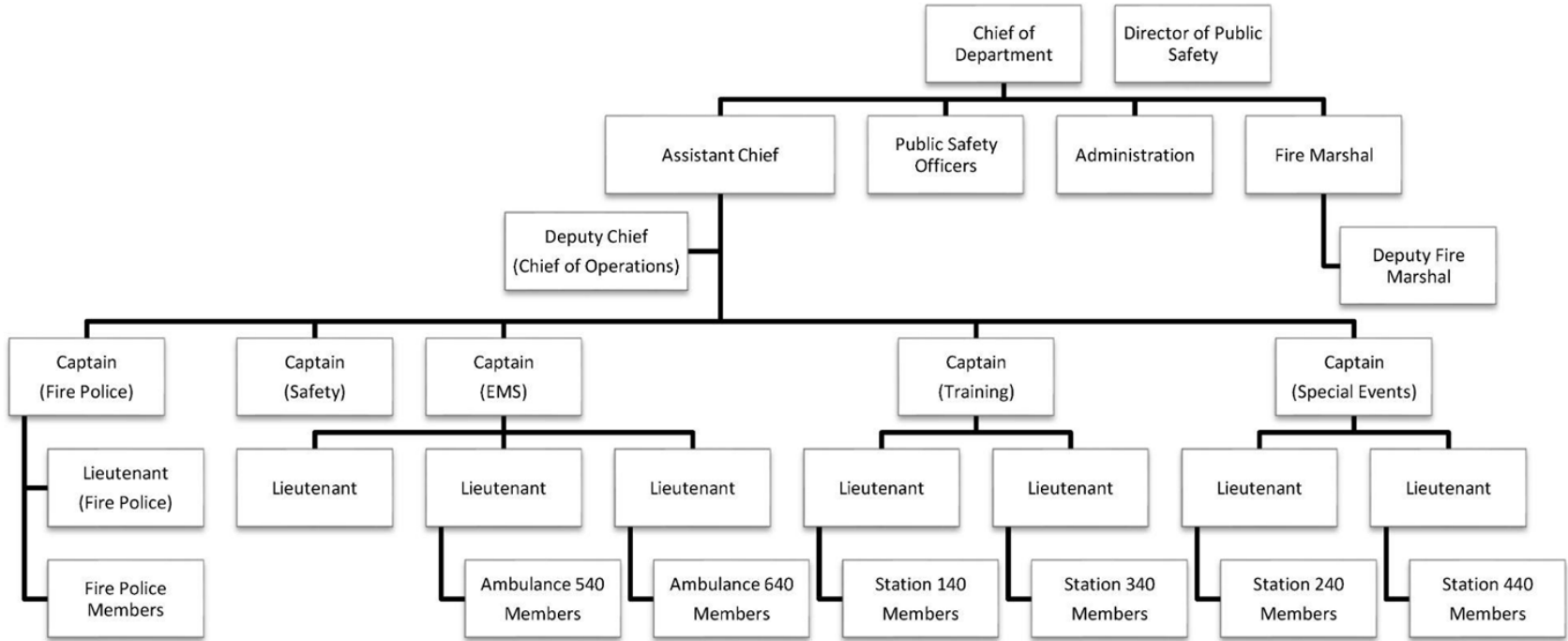
Chain of Command

- **SOG ADM 003**
 - Review and become familiar
- **Unity of Command**
 - Everyone has one supervisor
- **You report to your assigned station officer**
 - If your station officer is not on an incident scene, report to the line officer on the scene
- **Follow chain of command at all times including off duty**
- **Safety Concerns**
 - Does not require the chain of command to be followed

Chain of Command - Orders

- Order - an authoritative direction or instruction.
 - Command or mandate
 - Example: FF Farley deploy a 200' 1-³/₄" preconnect hoseline off ET140 and advance the hoseline into the first floor for fire attack.
- Follow orders given by an officer at all times!
- Never disobey an order!
- If you do disobey, it will result in disciplinary action.
- Do not ask "why" when asked, not time or place to ask.
- Orders from multiple officers, follow first officer's order and let second officer know you were given an order already.
 - If Second officer wants you to follow their order, the second officer owns the first officers order

TFD Command Structure



Accountability

- SOG FFS-003
- Way to keep track of members on incident scenes
- Members must be accounted for at all times!
- Report to the incident commander when entering a scene to give accountability tag
- If on an apparatus, the driver or officer will take your tag and give to IC
 - Remember to clip your tag into the apparatus tag before getting off apparatus!
- Before you leave the incident, let officer know and then report to IC to collect tag

Accountability

- Follow the same for other department activities
- Each member shall have two (2) accountability tags
- Missing or broken tags, notify Station Officer for replacement
- Freelancing not allowed!

TFD Accountability Identification

- Chief Officers: White
- **Captains: Red**
- **Lieutenants: Yellow**
- **Firefighters: Black**
- **Firefighter/EMTs: Blue**
- **Probationary Firefighters/Fire Police: Orange**
- **EMT/EMRs: Green**
- **Auxiliary: Purple**



TFD Identification Tags

- Different than the accountability tags
- Display or have present when attending other department related events or activities such as:
 - Riding on the ambulance
 - Attending department functions
 - Attending trainings
 - Attending community events
- Recommend connect ID tag to a key ring and hook on to pants belt loop.



Safety

- Safety is paramount.
- Your personal safety is number one priority!
- Wear appropriate PPE at all times
- Work in teams of two
 - Probationary Firefighter stick with a fire officer or senior firefighter
- Look around at your surroundings constantly
- If it doesn't feel safe, remain in a safe place until situation becomes safe.
- Risk vs Benefit
- Everyone goes home!

Infection Control

- SOG EMS - 003
- Infection Control System helps protect body from diseases
- Potential exposure to blood and other infectious disease
- Wear N95 if you are:
 - Trained to wear it
 - Suspect airborne pathogens
 - Follow OSHA facial hair poster
- Wear medical gloves:
 - Patient contact
 - Touching contaminated equipment
 - Disinfecting equipment
- All bloody waste shall be discharged in red BIO bin or BIO bag
 - Dropped off to hospital

Exposure Reporting

- SOG EMS-001
- Exposure to bloodborne pathogens (blood, bodily fluids, etc)
- Notify Duty Officer and Infection Control Officer immediately
 - Infection Control Officer - Lieutenant Amy Ziegelmeier
 - Infection Control Officer - EMT Kelly Euliano
- Complete Blood/Bodily Fluid Exposure Incident Report
- If you need to seek treatment:
 - Corpcare during business hours
 - Rockville Hospital after hours
- All soaked PPE placed into Yellow linen bag and left at Station 140 for cleaning
 - Inform Career staff on white board for cleaning
 - If spare gear is needed, contact department Equipment Officer

Accident Report

- **SOG APP-008**
 - Covers accidents in both department and personal vehicles
- **Personal Vehicles:**
 - **If you were driving to/from an emergency call, to/from training, or to/from a department function;**
 - **Stop the vehicle and/or move to a safe area if possible.**
 - **Members should never leave the scene. CGS Section 14-224, "Evasion of Responsibility."**
 - **Call Dispatch and inform them of the situation.**
 - **Request additional resources as needed (EMS, Fire, etc).**
 - **Request State Police to the scene.**
 - **When able, make notification to Duty Officer and/or Chief Officer**
- **Members are to complete an "Accident Report Form" within 24 hours of an Incident.**
 - Forms are located at the Training Center.
 - Duty Officer or Station Officer can assist with this form

Injury Process

- **Notify your station officer and/or duty officer immediately**
- **If the injury requires immediate attention:**
 - **Rockville Hospital ER**
- **If the injury does not require immediate attention:**
 - **Corpcare Occupational**
- **Get injury report form from station officer and/or duty officer and fill out**
- **Give injury report back to your station officer and/or duty officer.**
- **Offline until you get better and cleared by Corp Care to return to work**
- **Keep your station officer informed throughout the process**
- **If the injury is off duty, notify your station officer**
 - **You will be offline until you see Corp Care**

Annual Physical

- Corp Care Occupational, South Windsor
- Required to be completed before joining
- Required to be completed every year afterwards
- Annual physical allows the opportunity to:
 - Check for any health issues
 - You are fit for the job
 - Compliance with OSHA/NFPA 1500
- Complete annual physicals every year:
 - Before June 30
- Fill out packets and bring to appointment
 - Extra packets in the Training Center



Annual Fit Testing

- **SCBA Mask**
 - See Career Staff for fit testing
 - Usually beginning of the new year (February)
- **N95 Mask**
 - Tested during annual physical
- **Adhere to OSHA Approved Facial Hair at all times!**



Online Training

- **Fire Rescue 1**

- **Mandated annual training required**
- **11 months to complete**
- **You will receive an email with login instructions**
- **Examples of annual required courses:**
 - **Sexual Harassment**
 - **Bloodborne Pathogens**
 - **Confidentiality (HIPPA)**
 - **Hazardous Material Awareness**
 - **Ethics**
 - **Mental Health and Wellness**
 - **Additional courses depending on other involvements in department**



Roles & Responsibilities

- ADM Policy #17
- Be of good moral character
- Professional Conduct at all times
- Representing the fire department in the community
- Respond to emergency and non emergency calls
- Maintain a minimum response rate of 12%
 - Nights, weekends, and holidays
 - You can respond to weekday calls but they do not count in the percentage for reimbursement
- Attend all Monday night trainings
- Attend monthly business meeting
- Complete required online training
- Complete annual physical/fit testing every year

Roles & Responsibilities

- Commit to a minimum 5 years
- One (1) year of probation
 - Former members only need to do six months
- Reside in town or live within 5 miles of the town line
- Adhere to rules, policies, and SOGs
- Willing to become certified as a firefighter or EMT or both
- Attend all annual department events
- Be involved and take on additional projects or roles
- **Go above and beyond!**
- **You will be evaluated during probationary period.**

Active Member Call Response

- Volunteer Hours (weeknights, weekends, & holidays)
 - 2025 Total = **1157**
- Maintain minimum of 12% of volunteer hour calls per month
 - 2025 average = **13 calls** per month
- Eligible for reimbursement minimum 15% of volunteer hour calls per month
 - 2025 average = **15 calls** per month
- Remember, you can respond during the daytime with career staff but we need people for the volunteer hours first!
- This is minimum criteria to maintain membership and receive reimbursement

What can you take away?

- Helping the community
- Working together for common good
- Learning life saving skills
 - Apply anywhere in life
- Stipend Program
- Incentives Program
- Free Training opportunities
- Advancement Opportunities
- Neighbors Helping Neighbors!

Stipend Program

- Able to receive stipend every quarter after successful completion of probationary period
- Four (4) quarters in the year
- Meet stipend criteria
 - Minimum active member criteria
 - Minimum 15% of calls each quarter
 - Attend trainings/meetings
 - Be present on frequent basis
- Examples of amounts:
 - Firefighter = \$450 per quarter
 - EMT = \$450 per quarter
 - Firefighter/EMT = \$900 per quarter
 - Secretary = \$350 per quarter



Incentive Program

- 401 (a) Retirement Plan
- Eligible after 5 years of service
- Annual town contribution of \$500
 - Maintain active membership criteria in order to receive the amount
- Must meet stipend 3 out of the 4 quarters
- Meet minimum active member criteria to be eligible to participate



401(a) Plan

[.fôr-(,)ō-(,)wən-'ā 'plan]

An employer-sponsored retirement plan available to employees of government agencies, educational institutions, and non-profit organizations.

Annual Department Events

- Bells Ceremony
- Open House
- Christmas Tour
- Town Events
- Phonebook
- Annual Meeting
- Department Holiday Party
- Senior Center Cookout/Party
- Other events in town



Memorial Garden

- Built in 2009 to honor:
- Lieutenant Gary M. Passaro
 - Died in LODD at Hazmat Drill
 - January 18, 1990
- Photographer Robert “Cookie” Cooke
 - Died in MVA while returning home from Training Center
 - June 7, 2001
- They made ultimate sacrifice
- Honor them every day
- Respect the memorial and if you see weeds, pull them! See snow, shovel snow!



Emergency Resources

- PEER Team - department members that are available 24/7 to talk or to help make a referral to counselor
 - Details on next slide
- 988 - Suicide & Crisis Lifeline 24/7 support
 - www.988lifeline.org
- EAP - free resources for all department members
 - www.publicsafetyeap.com
- National Alliance for Mental Illness (NAMI) - support geared for public safety
 - www.nami.org/frontlinewellness or 1-800-273-TALK (8255) or text "10-18" to 741741
- QPR - Questions, Persuade, Refer
 - www.qprinstitute.com

Peer Support Team

- Need someone to talk to?
- Call a member of the peer support team:
 - Don Corne 860-539-0557
 - Kim Gottier 860-558-6416
 - Jeff Gallagher 207-451-7462
 - Doug Indermaur 860-690-6480
 - Trevor Gantick 860-942-0516
 - Ben Roper 860-836-6168



No One Fights Alone
In Our Family!



If you are experiencing problems with drug addiction, alcohol addiction, going through a divorce, have stress in your life or are not doing well after a fire department related incident, PLEASE contact one of us!

We are all a part of the same family, and NO ONE in our family needs to fight alone! Everything discussed is confidential. If you have questions, please contact our support members.

Active 911

- App on mobile device
- Used as a tool to alert of an emergency or non emergency call
- Allows you to respond
 - Only click responding if you are going to the call!
- Allows other important information on app:
 - Hydrant locations
 - Pre Plan information on commercial buildings
 - Life Star Landing Zones
 - Location of Knox (Key) boxes
 - GPS Map
- Download the app and ask station officer to assist you with set up.



Member Portal

- <https://www.tollandfire.org/members-only-portal/>
- Username: TFD_member
- Password: T011and40
- Contains a lot of useful information
- SOGs/Admin documents on there

MINITOR / CHEAP SCANNER

Volunteer ff / EMT's are not given radio unless they are officers.

- All members will be granted minitor pager
- Cheap scanners can also be used to increase scene awareness and are encouraged.
- FCC 47 CFR § 90.427 and related Part 90 provisions, make it illegal to possess or program a transmitter capable of operating on frequencies for which you're not licensed



Important Tips

- Be a sponge (absorb information)
- Learn
- Ask questions (**no such thing as stupid questions!**)
- Respect
- Stick with an officer or senior firefighter
- Learning everyday. Don't ever stop taking classes!
- Maintain an equal Work/Life Balance!
- Freelancing is not tolerated!
- Down time - go through equipment
- **Remember Slow is smooth, and Smooth is fast!**

Fire Stations

- Station 140
 - 64 Crystal Lake Road
- Station 240
 - 3 Rhodes Road
- Station 340
 - 247 Gehring Road
- Station 440
 - 107 Plains Road
- Training Center
 - 191 Merrow Road



Apparatus

- Service Vehicles
- Ambulances
- Engine Tanks (Fire Pumpers)
- Tankers
- Ladder Truck
- Trailers
- UTV & ATV
- Covered more in depth in Part III



Types of Emergency Calls

- Structure Fires
- Vehicle Fires
- Motor Vehicle Accidents (MVA)
- Gas Leaks
- Tree on wires down
- Medical Calls
- Hazardous Materials
- Water Rescues
- Carbon Monoxide (CO) with Symptoms



Non Emergency Calls

- Lift Assists
- Carbon Monoxide (CO) with No Symptoms
- Service Calls
 - Trouble alarms
 - Water Leaks/Flooding
 - Animal Rescues
 - Trees down without wires
 - Unauthorized burning/Smoke Investigations
 - Install Smoke Alarms
- Station Standbys



Part II

Kris Farley

Firefighter

2 year member

Day Job: Systems Engineer - Extreme networks

Background: Computer / Electrical Engineering - Networking



The background features a large, faint watermark of the Tolland Fire Department logo. The logo is a Maltese cross with a central circle containing the number '40'. Above the cross is a banner with the text 'TOLLAND FIRE DEPT' and below it is another banner with 'TOLLAND, CT'. The text 'SERVING SINCE 1933' is also visible within the logo's design.

SMOKING / VAPING

Under CT Gen. Stat. § 7-313j, a firefighter is eligible for wage replacement if they:

Have no evidence of cigarette or any other tobacco product use within 15 years prior to cancer diagnosis

Currently this does not cover Vaping / nicotine replacement products (zyns, nicorette gum etc)

SMOKING IS BAD FOR YOUR HEALTH - DON'T DO IT

Personal Protective Equipment (PPE)

SERVING SINCE 1933



SOG PPE - 001



Protection Against Heat and Flames

Fire-resistant materials in PPE shield firefighters from burns and extreme temperatures.

(Source: National Fire Protection Association, NFPA 1971)



Respiratory Safety

SCBA (Self-Contained Breathing Apparatus) prevents inhalation of toxic gases and smoke.

(Source: Occupational Safety and Health Administration, OSHA 1910.134)



Chemical and Particulate Barrier

PPE reduces exposure to carcinogens and hazardous substances encountered during firefighting.

(Source: International Association of Fire Fighters, Cancer Awareness and Prevention Guide)



Impact Protection

Helmets and gloves minimize injuries from falling debris and sharp objects.

(Source: Firefighter Life Safety Research Center)



Improved Survival in Dangerous Environments

Proper PPE allows firefighters to work safely in structurally compromised or hazardous locations.

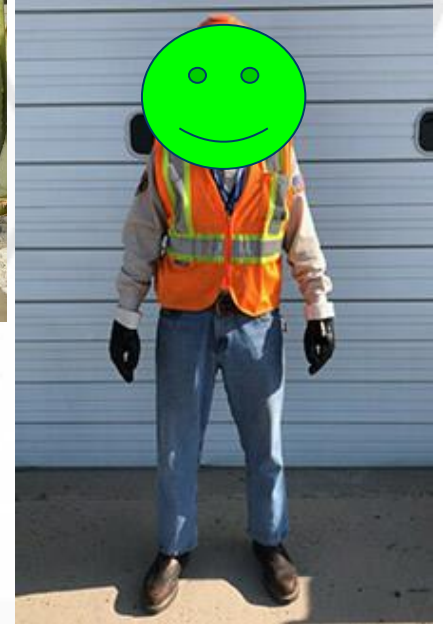
(Source: Fire Engineering Magazine)

WHAT TO WEAR TO SCENE

PRIORITIZE PPE AT ALL TIMES - TAKE TIME TO SET YOURSELF UP BEFORE HELPING OTHERS - DON'T BECOME A VICTIM!

CLOSE TOED SHOES ARE REQUIRED AT ALL TIME ON ALL SCENES

SHORTS ARE NOT ALLOWED TO BE WORN ON SCENES - WEAR BUNKER PANTS OVER SHORTS.



OSHA Approved Facial Hair



Protection comes in many forms!



YOUR SUIT PROTECTS YOU (from some things)

Moisture vapour (sweat)

Water/Steam/Hose water

Blood, bloodborne pathogens

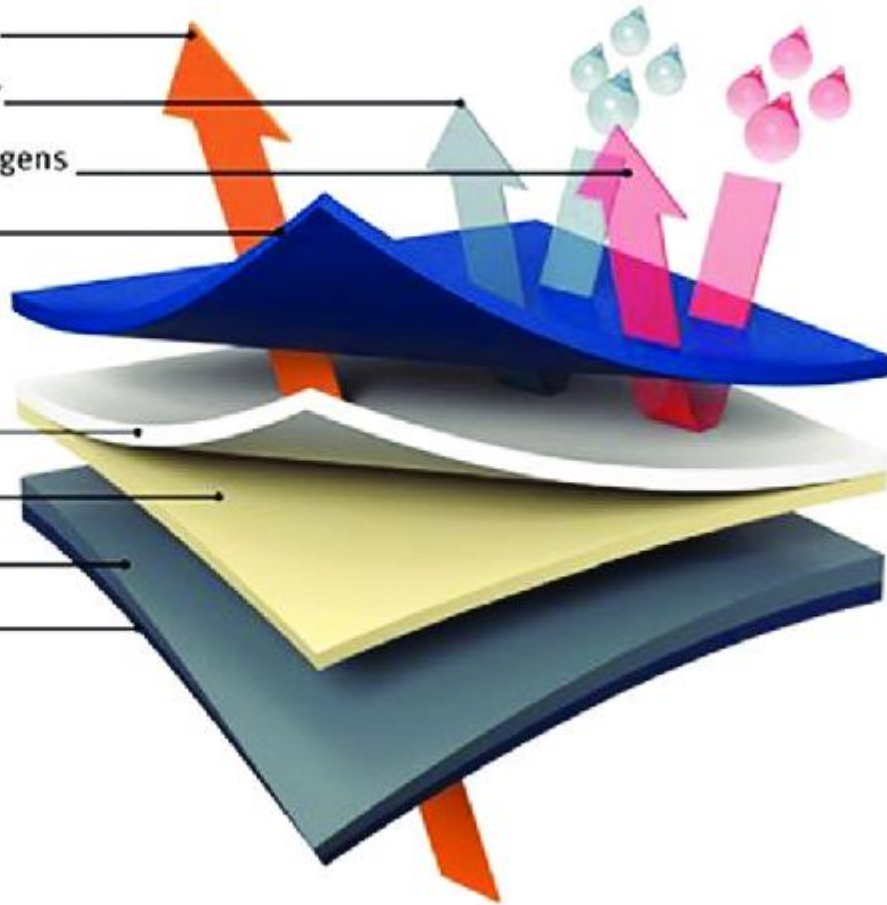
Outer material

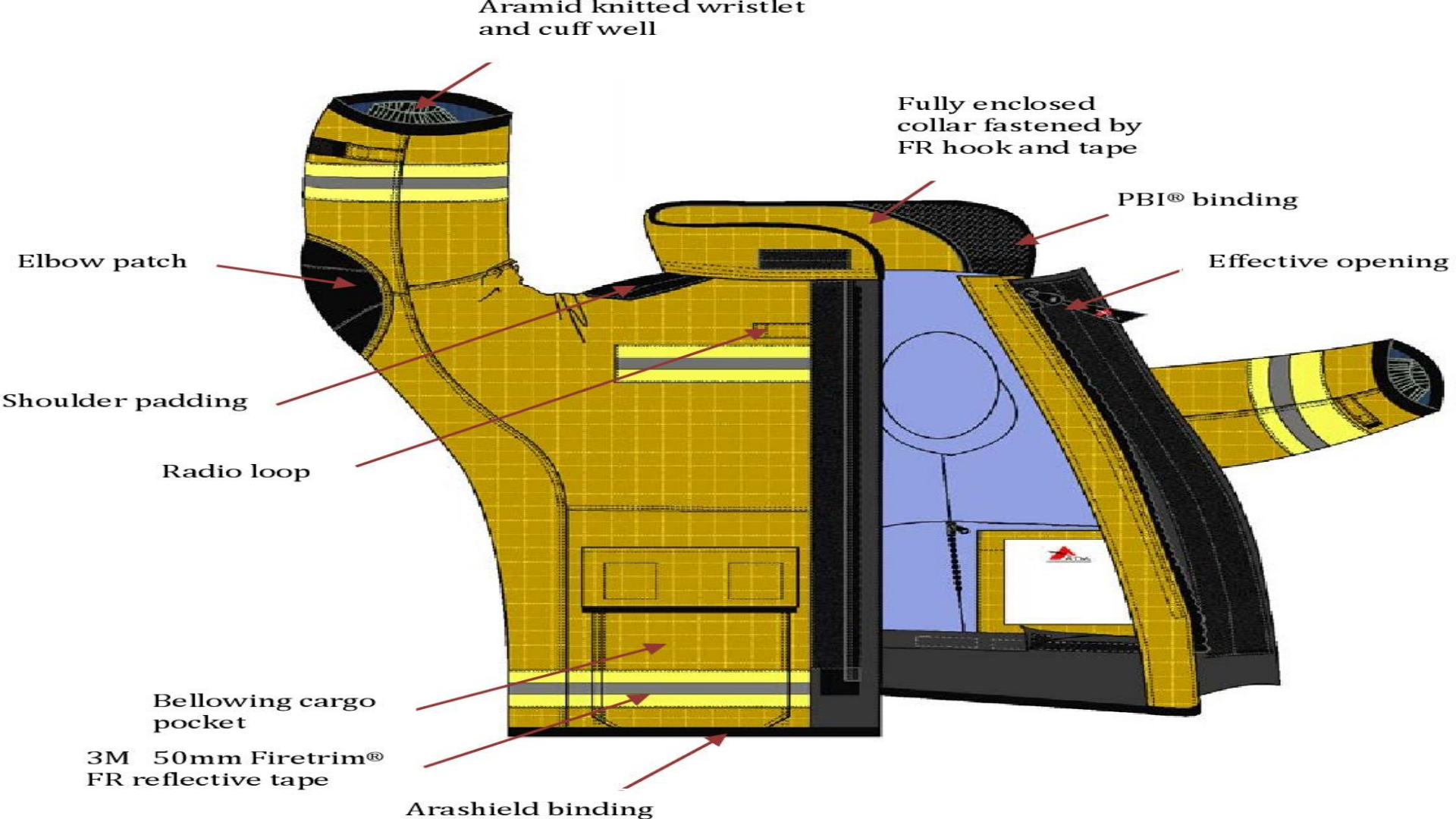
GORE-TEX Moisture
Barrier with
GORE® CROSSTECH®
Product Technology

Textile support

Thermal barrier

Lining





Basic Gear

59 pounds

HELMET
6 pounds

BREATHING
APPARATUS
27 pounds

LIGHT
4 pounds

BUNKER GEAR:
(boots, pants,
coat, radio,
gloves, personal
hand tools)
22 pounds



Irons

87 pounds

BASIC GEAR
59 pounds

AXE
6 pounds

RABBIT TOOL
12 pounds

HALLIGAN
10 pounds



The irons firefighter, named for the tools he carries, also searches for people who might be trapped. He carries a Halligan for forcing doors or windows, an ax for breaking through doors and a specialized tool for forcing locks known as a Rabbit tool.

Can Man

96 pounds

BASIC GEAR
59 pounds

HALLIGAN HOOK
7 pounds

FIRE EXTINGUISHER
30 pounds

The "can man," so named because he carries a fire extinguisher canister, enters the building looking for people who need to be rescued. The pressurized water extinguisher can be used to quench small areas of flame during the search for victims. He also carries a Halligan hook.



Roof

130 pounds

BASIC GEAR
59 pounds

HALLIGAN HOOK
7 pounds

HALLIGAN
10 pounds

RESCUE ROPE
26 pounds

ROOF SAW
28 pounds

The roof firefighter, who bears the most weight, travels to the roof, often on a ladder. He may cut holes in the roof using a power saw to gain access to the fire, or use a Halligan hook to force open roof doors. A rope is used to rescue people from windows below.



UV RAYS FROM THE SUN



**ARE THE #1 KILLER OF
TURNOUT GEAR**

Integrated Drag Rescue Loop provides a horizontal pull strength of 1,000 lbs. to assist with rescuing a downed firefighter

New Harness Materials offer greater resistance to chemical exposure and less water absorption to help minimize contamination

Electronic PAR (ePAR) provides wireless communication between the firefighter and incident command (using Monitor telemetry software solution with Pro Package) to improve fireground accountability and communications

"Buddy" Lights enable a 360° view of the firefighter's air pressure and PASS status

Aluminum Alloy Backframe offers a lightweight, durable design to withstand the rigors of the fireground

New E-Z Flo C5 Regulator offers enhanced breathing performance, helping to reduce user burden and improve operational efficiencies



3M™ Scotchlite™ Reflective Material enhances visibility of the SCBA when operating in low light conditions, improving safety and accountability on the fireground

Naturally Articulating Waist Pad promotes greater range of motion to the firefighter, while transferring weight to the hips for a more balanced load

New Buckle Design provides firm hold to prevent inadvertent loosening of shoulder and waist straps to help provide a secure fit of SCBA on the firefighter



MASKS

PLEASE
CLEAN
YOUR
MASK

(AFTER EVERY USE)

Loosen
straps
After every
use!



E-TOOLS AKA E-draulic

SERVING SINCE 1933

Spreaders



Cutters





FIREFIGHTERTOOLBOX.COM

Personal Vehicle Response (POV)



- TFD SOG ADM 005 Section H (2)
 - Please respond directly to a station unless:
 - (1) the response route would take you directly past the incident, or
 - (2) if responding to the station would be considered back-tracking, or
 - (3) if requested by an officer.
 - Backtracking only applies to in town calls
 - It is against SOG's to respond in your POV to mutual aid calls
-

Parking on Emergency Calls (POV)

ALL FIRE / POLICE APPARATUS TAKE PRIORITY ON A SCENE - YIELD TO ALL EMERGENCY VEHICLES

Do not Block entrances to residences for fire apparatus

Park on the same side as the incident

Park at least 2 telephone poles away from residence (225ft - 600ft)

Be prepared to relocate your vehicle if needed

Listen to fire police / officer instructions for parking vehicles if they are on scene

For tree on wires / wires down, be cautious approaching scene

Prioritize safety

If the Driveway is long - 1. Try to catch apparatus going up driveway. 2. Ask firepolice for a ride up the driveway 3. Walk the driveway

New member on scene

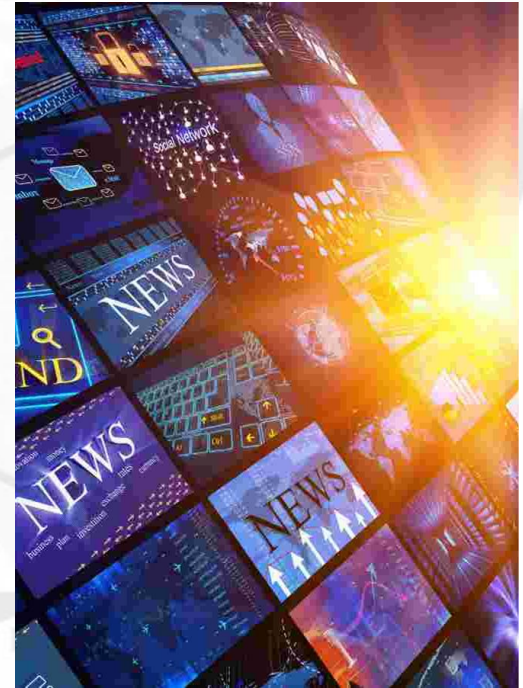


- If you are a probationary member, do NOT show up first on scene, await arrival of officer / apparatus
- Troop C - Go to your assigned station and wait. Do not go to scene
- Make best effort to get to your assigned station and get on an apparatus
- Be mindful of environment (read the room) don't be joking with serious matters, be aware of other people and their feelings
- Discussion on how new members can assist on all types of scene
- Do not wear shorts or open toe shoes!

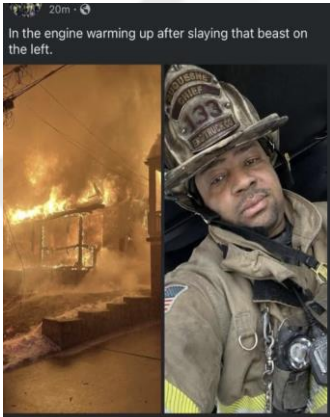
TOLLAND, CT

Interaction with news / social media

- You as an EMT, Firefighter, or probationary member are a representation of the department as a whole
- DO NOT talk to news crews - refer them to officers / chiefs on scene
- Think about optics (how you carry yourself, respond etc - see PPE)
- Be mindful of “RING” cameras, CCTV and other AV equipment
- DO NOT be “that firefighter” on social media it’s a bad look for all



Don't be "THAT" firefighter



Who's gonna notice!?



GOD BLESS
THE YARD

HIHFTY.

Private group · 124.1K members



+ Invite

Share

Joined ▾



About

[Discussion](#)

Members

Events

Media

Files



Officers-

With the new Axon Body and Cruiser camera's being rolled out to the masses, please note that they are very sensitive with a lot of AI recording which is said to be crystal clear from within 100ft. Even if a Trooper has their body camera MUTED, if anyone is within 50ft radius of the cruiser, the cruiser camera will still be picking up the audio (and obviously video) of everything on scene.

Word through the grapevine is the lawsuits are already starting to roll in for Troopers who stepped away from the main focus of the scene, talking to other public safety staff about something else sounding possibly inappropriate (ie laughing about something else, etc) and although they think they are in a safe place, the FOI'd footage had also recorded their voices.

This may be worth explaining to our people about the liability to themselves and the department. If you want, I can try to get someone to a meeting one night to explain it in more detail but for now, maybe reminding them of this is worth it.

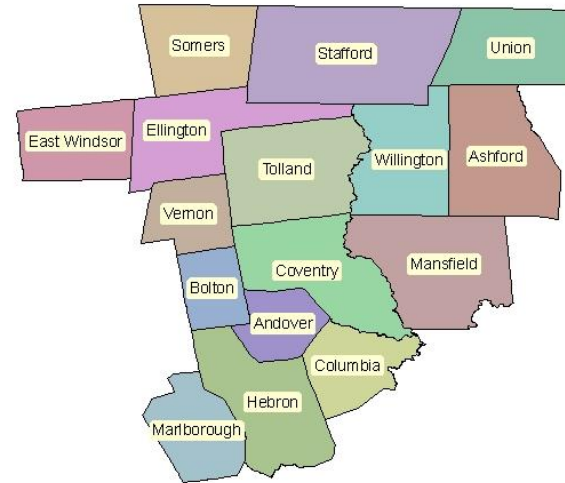
Blue lights

- BLUE LIGHTS ARE A COURTESY LIGHT
- You must yield to ALL OTHER EMERGENCY VEHICLES OPERATING IN EMERGENCY MODE
- YOU MUST FOLLOW ALL POSTED SPEED LIMITS / SIGNS / LIGHTS
- Only certified members are allowed blue light permits
- You may use them to respond to scenes or stations for calls
- They may be used in MUTUAL AID TOWNS ONLY to respond back in town
 - Must be renewed annually
- Can be revoked at anytime for any reason by an officer



Out of town response

- Only certified and “cleared(by officer)” Fire 1 / 2 or EMT’s are allowed to respond out of town (unless otherwise specified)
- Listen to your officers for instructions they will be your commanding officer for all out of town responses.
- Don’t drive your POV to out of town calls!



Fire School - ECFS

- 6 months - every other weekend sat
- sun 8am - 5pm
- Cannot miss more than 2 classes without failing course
- Must complete homework and exams (given at the end of the weekend) (you have two weeks to complete)
- You have to pay for the class initial
 - After a year with the department and off probation, eligible for reimbursement



Rockville Medic Vehicle

- There will be times the Rockville Medic vehicle will be driven back to a fire station
- Only drive this vehicle if you are authorized to do so by an officer (and comfortable doing so)!
- Place into station bay if possible (**turn the engine off** if placing in bay)



Life Star



- FD sets up Landing Zone (LZ)
- Follow Officer or Senior Firefighter to assist with:
 - Marking LZ
 - Securing LZ
- Always stand opposite side of apparatus or in apparatus during landing and take off
- 75ft x 85ft LZ
- DO NOT APPROACH helicopter!
- DO NOT SHINE LIGHTS at helicopter!
- Always be aware of your surroundings!

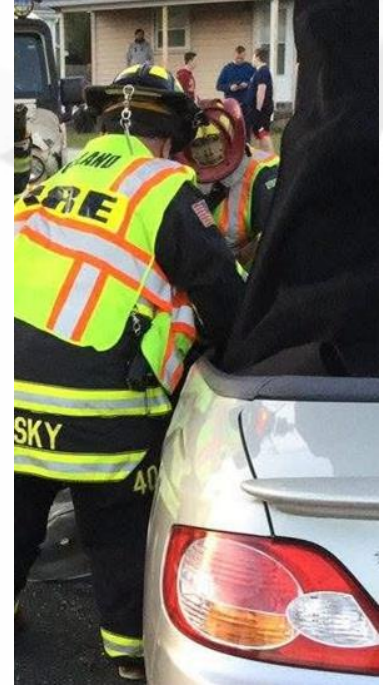
Medical Calls

- Firefighters can assist EMT's with help if requested by the EMT or officer
- Firefighters should wait outside of homes unless otherwise specified
- Firefighters may be asked to assist with lifting, pulling, packaging the pt.
- May be asked to write down patient information for EMTs
- May be asked to check patients refrigerator for medical information
 - Yellow Patient Information Form
- Firefighters may also be asked clear paths for Personnel and equipment transport
- If you are a firefighter only - do not show up first to medical call.
- Wear Medical Gloves If touching patient or equipment!



Operating in Roads

- YOUR SAFETY IS EVERYONE'S RESPONSIBILITY INCLUDING YOUR OWN
- Wear high vis (except for vehicle fires)
- Look at traffic and walk on the approaching traffic side of road
- Be mindful of opening doors in traffic
- Just because you have flashing lights - doesn't mean the driver will see you
- Avoid being in the middle of the road where possible (stay on the other side of the guardrail on highways when not needed)



Motor Vehicle Accidents

- WEAR APPROPRIATE PPE- NOT JUST BUNKER GEAR - HIGH VIS, FLASHLIGHTS ETC
- BE AWARE OF TRAFFIC - DO NOT BECOME A VICTIM - DON'T HAVE BACK TOWARDS TRAFFIC
- Exit out of the "Safe side" on apparatus when possible
- Stay with "buddy" at all times and be prepared to grab equipment from apparatus
- DO NOT DISTURB SCENE IF REQUESTED BY CSP



Interaction with CSP

- Listen to you commanding officer - IF CSP requests assistance, notify them and your commanding officer of existing task and let them sort it out.
- You are not police but everyone is responsible for preserving evidence (both on MVA and Fires and medical)
- IF CSP is on scene (typically medical, but could be high risk MVA) wait for clearance to enter.
- When in doubt, follow your commanding officer



Fire Scene Preservation

- Consider the ENTIRE scene as evidence
 - Similar to a crime scene
 - Fire Marshal needs to do investigation afterwards
- Preservation starts with you as a firefighter
- Do not touch or damage area of fire origin
 - Limit the damage as much as possible
 - We do not want to spoil or containment
- Secure the scene as best as possible
 - Fire Scene Tape
 - Cones
- **Follow direction of your assigned fire officer!**



Post Fire Calls

- Decon yourself (shower within the hour!)
- Wash gear if needed (station 1 washing machine)
 - Notify officer if gear damage is found
- Assist stations with repacking, refilling, washing, and general after-call maintenance for apparatus and equipment
- Just because you took your POV - doesn't mean you get off scot free!
- IN TICK CONDITIONS - you must check yourself after every call and notify your officer if ticks are found (SOG PD-19-005)



Trainings

- Every monday usually three to four times a month
- These trainings may be knowledge based or physical
- It's not difficult (it's fun!)
- You can absolutely make requests to your officer about trainings you'd like to see or do
- For all probation members you **MUST** show up to these trainings
 - Only excuses accepted are work, sickness or vacation
 - Failure to not show up may result in dismissal from dept or extension of probationary period.



Part III

**Anthony Calchera - Firefighter/EMT - 7.5 Year Member
Explorer Post -> Fire Police -> Firefighter -> Firefighter/EMT**

**Associate's Degree - Homeland Security
Bachelor's Degree - Public Safety and Security w/ Minor in Business
Goodwin University**

**Firefighter - Westover Air Reserve Base
Animal Control Officer (ACO 140) - Town of Tolland - 3 Years**



Fire Apparatus and Common Equipment

A large, faint watermark of the Tolland Fire Department logo is visible in the background. The logo is a Maltese cross with a central circle containing the number '40'. Above the cross, it says 'TOLLAND FIRE DEPT' and 'SERVING SINCE 1933'. Below the cross, it says 'EMS' and 'TOLLAND, CT'.

-
- Types of Apparatus
 - TFD Apparatus
 - Equipment and Locations
 - Stations

Types of Apparatus

Service Vehicles

Ambulances

Brush Response

Light Rescue / Utility

Heavy Rescue

Squad

Traffic Control / Blocker Units

Engine

Engine - Tank

Ladder Truck / Quint

Tower Ladder

Tiller

Water Rescue

Mobile Air Supply

Tanker

Service Vehicles

Service vehicles are utilized for light or administrative use and carry minimal equipment. A medical bag, AED, lockout kit and trailer/ tow equipment are among the most common items that can be found on these vehicles.

These vehicles are often utilized for plowing during the winter months, as well as towing year-round.

Vehicle	Location	Primary Use
Service 240	Station 240	Call Response/ Towing
Service 340	Station 240	Brush Response/Towing
Service 440	Station 240	Brush Response/ Towing/ Fire Police
Service 540	Station 240	Admin
Service 640	Station 140	Duty Officer



Ambulances

Ambulances are utilized for medical calls with a minimum crew of two EMS members. Crew members can be EMR or EMT certified, with a minimum of one EMT. A paramedic may also ride with the crew from a scene to the hospital, if the situation dictates the need.



Ambulance 740



Ambulance 540

Vehicle	Location
Ambulance 540	Station 140
Ambulance 640	Station 240
Ambulance 740	Station 140

(Ambulance 740 is reserved as a spare)



Ambulance 640

Ambulance Equipment

Ambulances carry a large variety of medical and safety equipment. The most common items include the stretcher, stair chair, backboards, medical bag and AED.



Light Rescue / Utility

These vehicles carry more equipment than service vehicles, but not as much as a full size piece of apparatus.

A variety of tools such as brooms, shovels, power tools, extrication equipment and speedy dry are just some of the items that can be found on these trucks.



Service 140 – Housed at Station 140
Used for MVA and Medical Response

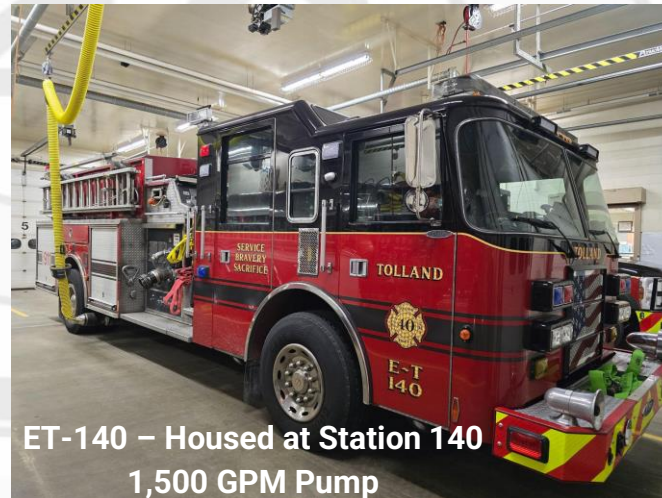
Engine-Tank (ET) 140, 340, 440

The main function of an Engine-Tank (ET) is fire response and suppression. These trucks carry a variety of hose, couplings, adapters, hand tools, RIT packs, SCBA and basic hazmat and extrication equipment. Each ET can seat a crew of six, including a driver, officer and four firefighters. Each ET holds 1,000 gallons of water.

Water capacities for Engines can be as much as 800 gallons, and ET's can carry anywhere from 800 gallons to 1,500 gallons.

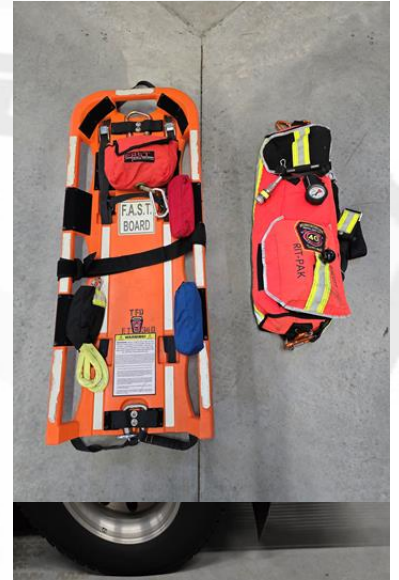
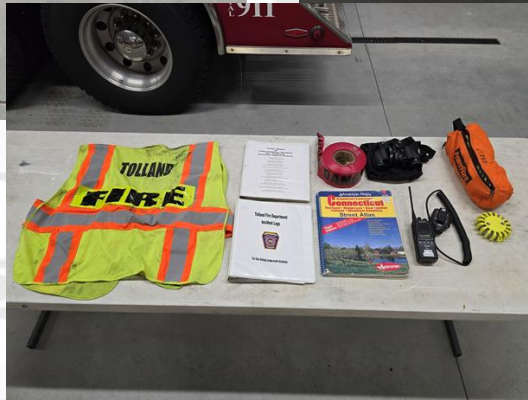
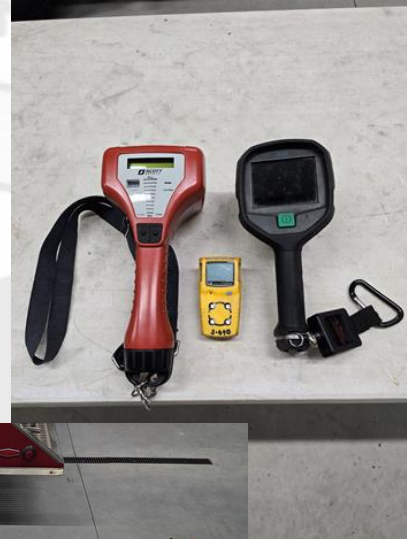
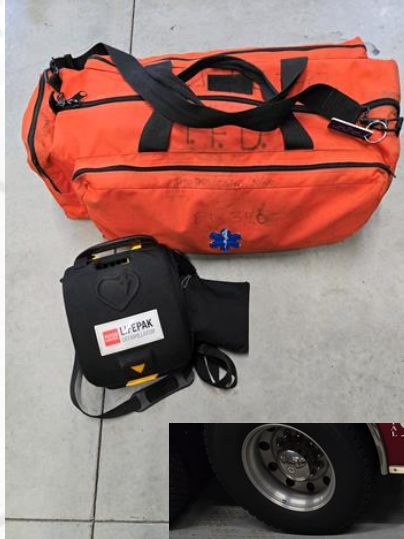


ET-340 – Housed at Station 340
1,250 GPM Pump

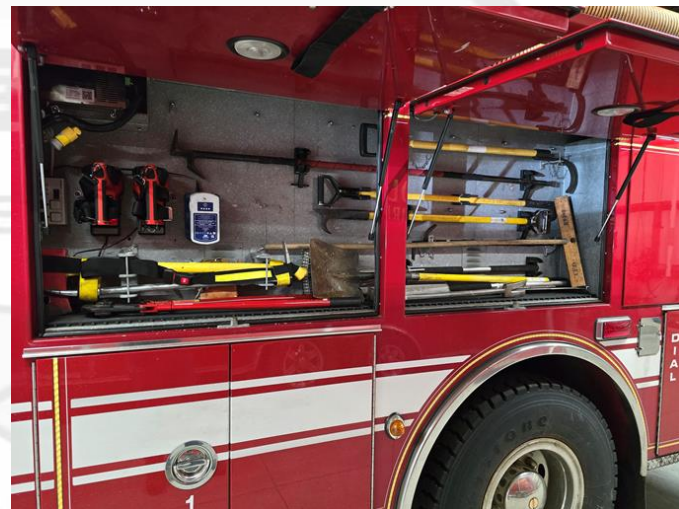


ET-140 – Housed at Station 140
1,500 GPM Pump

Engine-Tank Equipment



ET Equipment Continued



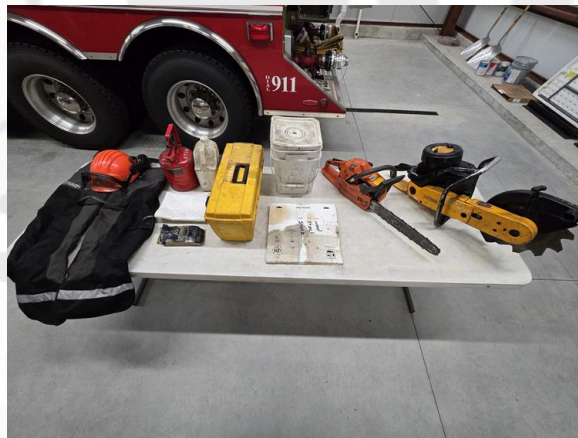
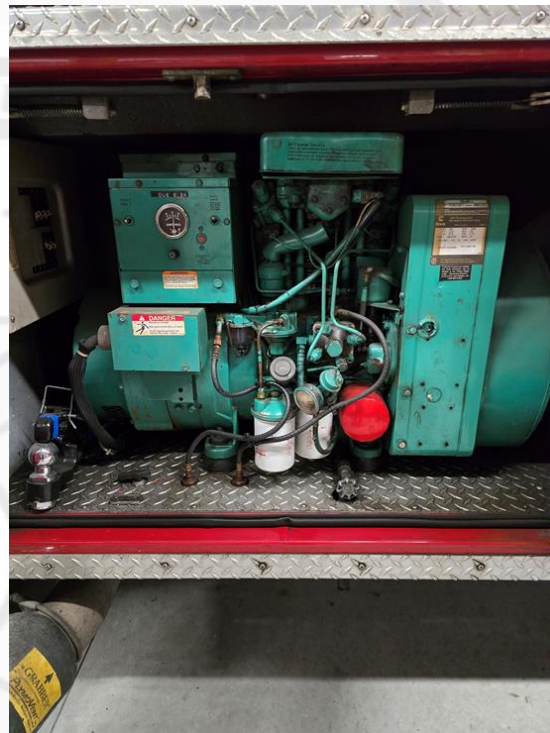
ET Equipment Cont.



ET Equipment Cont.



ET Equipment Cont.



Squad 240

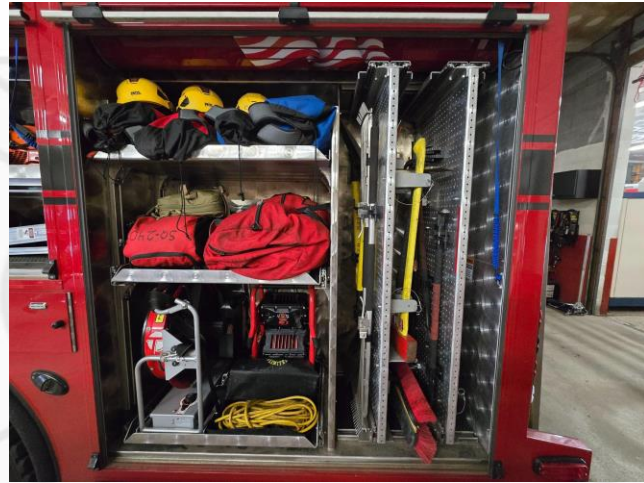
A "Squad" combines the water and pump capacity of an Engine with the rescue and tool capabilities of a traditional Rescue Truck.

Squad 240, in addition to hose, adapters and hand tools, carries an extensive array of extrication equipment, technical/ rope rescue equipment, power tools and hazmat response supplies.

Parked at Station 240, this apparatus is the primary response piece for fires, motor vehicle accidents and incidents on I-84.



Squad 240 Equipment



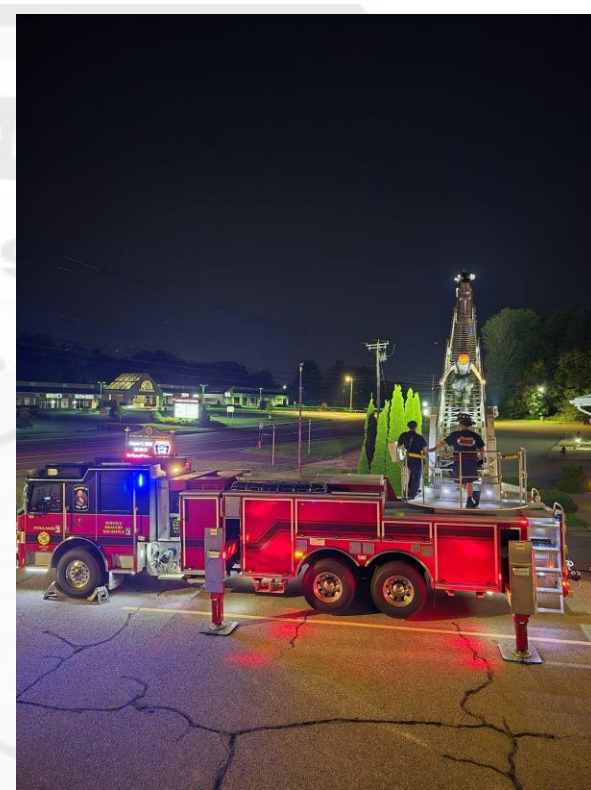
Squad 240 Equipment Cont.



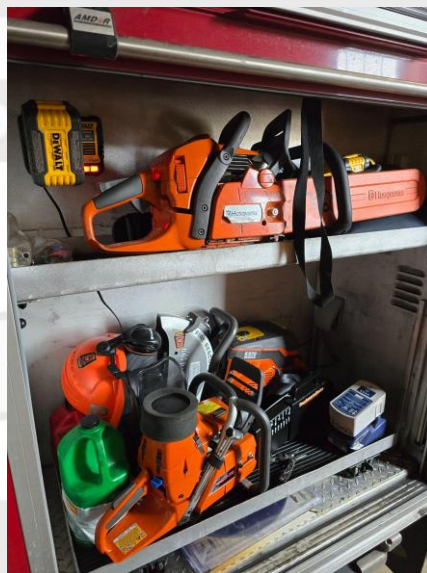
Truck 240

Truck 240 is a 105' rear mount aerial piece with a 500 gallon tank and an onboard pump.

Truck 240 carries many of the basic hand and power tools that can be found on the other trucks. In addition to these tools, there are also several large extension ladders stored in the rear compartment.



Truck 240 Equipment



Tank 140/440

Tank 140 and 440 both have water capacities of 3,000 gallons. Each truck carries basic equipment including hose, adapters, hand tools and SCBA's.

Many of the tools and equipment found on the other trucks cannot be found on the Tankers, as their main focus is transporting large volumes of water to a scene.



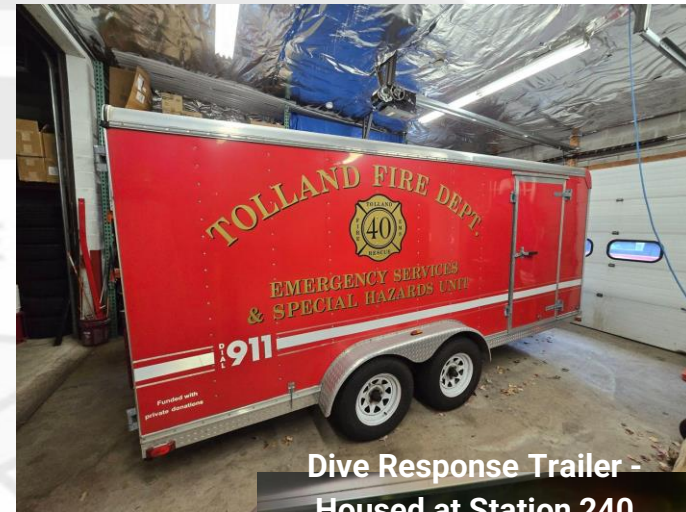
Tank-440 – Housed at Station 340



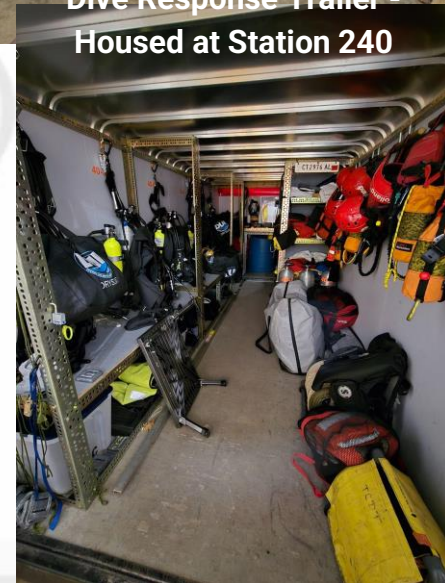
Trailers



Brush Response Trailer -
Housed at Station 340



Dive Response Trailer -
Housed at Station 240



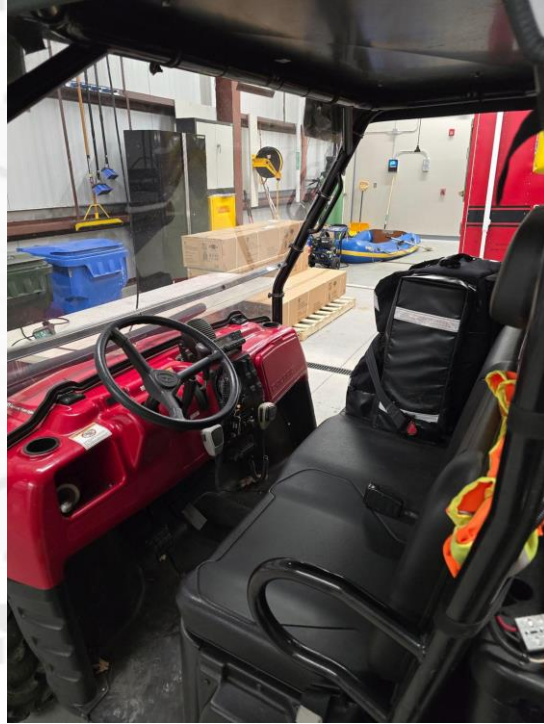
ATV 240



TOLLAND FIRE DEPT
SERVING SINCE 1933

UTV 240

TOLLAND FIRE DEPT
SERVING SINCE 1922



Apparatus & Equipment

- **Expected to learn and know all equipment:**
 - Locations on apparatus
 - How to use the equipment
 - What the equipment is used for
- **Stop down and go through apparatus**
 - Only way to learn is by seeing and touching
- **Ask questions to senior firefighters or officers**
- **You will be asked to grab equipment on scene**
- **You will be quizzed on equipment from time to time**

Apparatus, Stations, & Equipment

- **Everyone's responsibility to keep stations, apparatus, and equipment ready for use and to:**
 - **Put equipment back where you took it from**
 - **Place equipment or apparatus back in service in ready position and cleaned**
 - **Keep stations, apparatus, and equipment clean**
 - **If you see something dirty, take the extra step and correct it**
 - **Broken equipment or apparatus, remove from service and notify Station Officer**
- **If you don't know what or how to do it, ask for help!**

TOLLAND FIRE DEPT
SERVING SINCE 1933



TOLLAND, CT

